



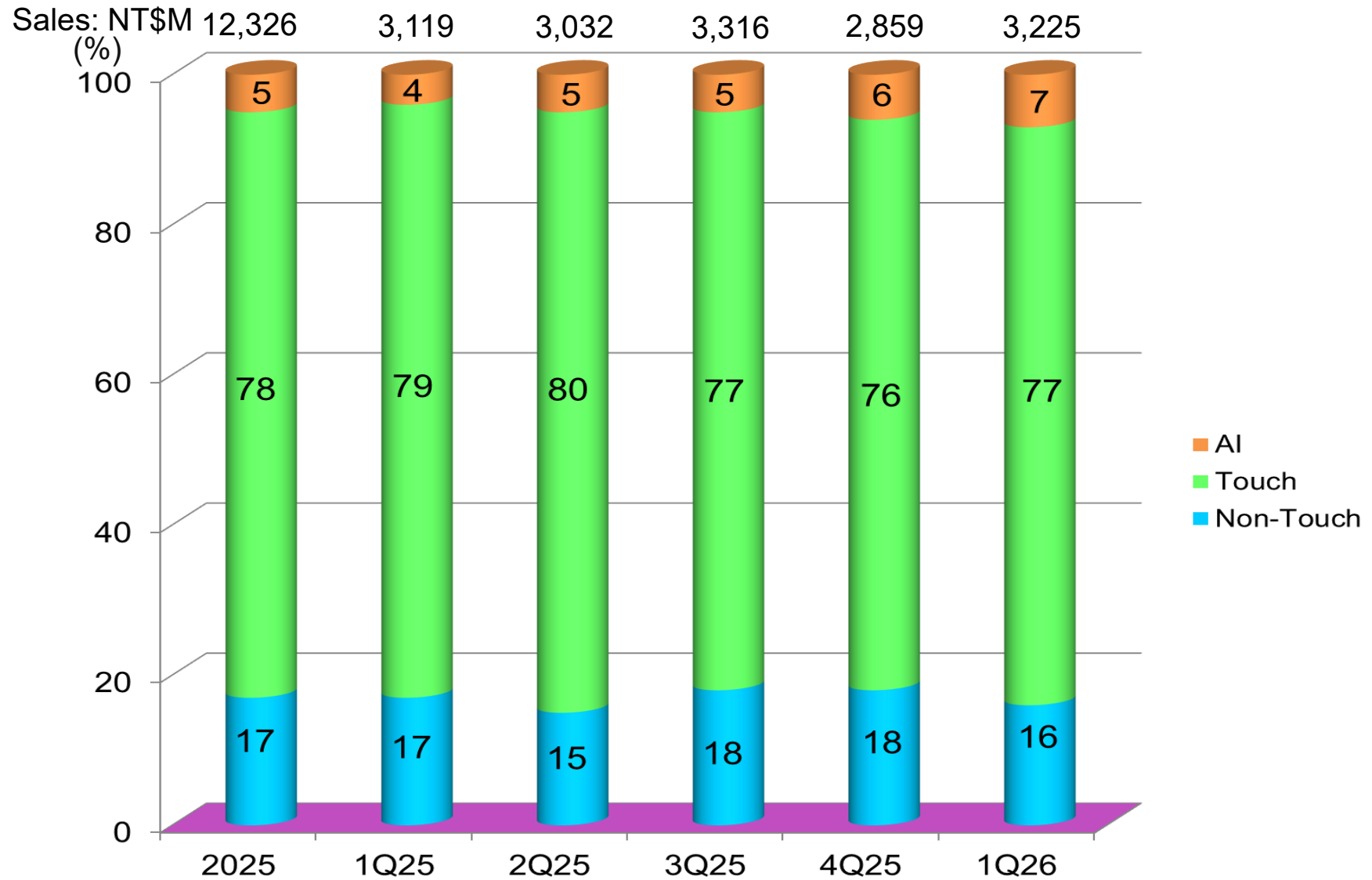
1Q26 Investor Conference

2026/06/08



ELAN Microelectronics Corporation

Sales Breakdown by Product Line (Consolidated)



- AI : ADAS, ITS, Algorithm.....
- Touch : Touchpad, Touchscreen Controller, Biometrics
- Non-Touch : Pointing Stick, MCU& Others

1Q26 Income Statement

YoY Comparison (Consolidated)

NT\$M

	1Q26	%	1Q25	%	YoY(%)
Sales	3,225	100.0	3,119	100.0	3.4
Gross profit	1,537	47.7	1,564	50.1	(1.7)
Sales expense	83	2.6	83	2.7	
G&A expense	129	4.0	118	3.8	
R&D expense	546	16.9	578	18.5	
OPEX	758	23.5	779	25.0	(2.7)
Operating profit	779	24.2	785	25.1	(0.8)
Non-operating income & exp.	61	1.8	(66)	(2.0)	
Profit before tax	840	26.0	719	23.1	16.8
Net profit	676	21.0	515	16.5	
Belong					
Parent company	705	21.9	549	17.6	28.4
Non-Controlling Interests	(29)		(34)		
* EPS (NT\$)	2.46		1.92		28.1

* 304 million shares issued: 286.3/ 286.2 million shares outstanding as of the end of March 2026/ March 2025.

* Consolidated Statement of Financial Position (Reviewed).



1Q26 Income Statement

QoQ Comparison (Consolidated)

NT\$M

	1Q26	%	4Q25	%	QoQ(%)
Sales	3,225	100.0	2,859	100.0	12.8
Gross profit	1,537	47.7	1,410	49.3	9.0
Sales expense	83	2.6	86	3.0	
G&A expense	129	4.0	117	4.1	
R&D expense	546	16.9	546	19.1	
OPEX	758	23.5	749	26.2	1.2
Operating profit	779	24.2	661	23.1	17.9
Non-operating income & exp.	61	1.8	107	3.8	
Profit before tax	840	26.0	768	26.9	9.4
Net profit	676	21.0	712	24.9	
Belong					
Parent company	705	21.9	735	25.7	(4.1)
Non-Controlling Interests	(29)		(23)		
* EPS (NT\$)	2.46		2.57		(4.3)

* 304 million shares issued: 286.3 million shares outstanding as of the end of reporting period.

* Consolidated Statement of Financial Position (Reviewed).



Balance Sheets

March. 31, 2026 (Consolidated)

	NT\$M
Current assets	8,628
Cash and cash equivalents	3,790
Current financial assets	389
A/R&A/N	2,310
Inventory	1,682
Other current assets	41
Other current financial assets	416
Non-current financial assets	1,882
Fixed assets	4,698
Other non-current assets	1,503
Total Assets	16,711
Current liabilities	4,974
Non-current liabilities	1,939
Total Liabilities	6,913
Capital stock	3,039
Capital surplus	1,182
Retained earnings	6,379
Other equity interest	(94)
Treasury stock	(833)
Non-controlling interests	125
Total Stockholders' Equity	9,798

(Reviewed)



Cash Flow Statement

March. 31, 2026 (Consolidated)

	NT\$M
Income before tax	840
Dep & Amort.	79
Impairment loss and disposal loss on inventory	38
Inc. in A/R & N/R	(208)
Inc. of inventory	(122)
Dec. in other receivables	85
Inc. of A/P & N/P	51
Inc. in other current liabilities	174
Others	(9)
Operating cashflow	928
Dec. in time deposit with maturity over three-month	1,003
Cash inflows from mergers	37
Inc. F/A	(323)
Acquisition of intangible assets	(286)
Others	10
Investment cashflow	441
Inc. in short-term loans payable	30
Others	(10)
Financing cashflow	20
Change in cash	1,390
Beg. Cash	2,400
End. Cash	3,790

(Reviewed)



2Q26 Guidance

Based on Current Assumptions of Future Prospects, ELAN Expects:

- Consolidate Revenue to be Approximately between NT\$ 3.2 Billion and NT\$ 3.4 Billion
 - Gross Margin to be about 46.5% to 49.5%
 - Operating Margin to be about 21.4% to 25.9%
-
- ELAN's forward-looking statements are subject to significant risks and uncertainties that could cause actual results to differ materially from the forward-looking statements made in this presentation.
 - Except as required by law, we undertake no obligation to update any forward-looking statement, whether as a result of new information, future events, or otherwise.

AI Agent Will Accelerate the Penetration of AI PC



The Important Input Interfaces of AI PC

1. Copilot Key
2. Data Security \Rightarrow Fingerprint Reader
3. Advance Haptic Touchpad
4. Circle to Search Touchscreen & Pen

4-in-1 Copilot Key Won 2026 COMPUTEX BC Awards

AI-ENHANCED BIOMETRIC INTERACTION

ELAN Fingerprint Solution



Multi-Finger Shortcut
Custom Gestures for Productivity



Cursor Control
Precise & Seamless
High Resolution Cursor



Handwriting Shortcut
Write & Trigger
Smarter Workflow



Haptic Feedback
Instant Vibration Response
You Can Feel



On Device AI Security
AI Anti-Spoofing



**ELAN
Fingerprint
Peripherals**



2026 Best Peripherals & Accessories

4 in 1 Copilot Key



ELAN Solution inside Newly Released Microsoft Surface Laptop

Surface Laptop Business 13-inch

Surface Laptop for Business

13-inch | Intel Core Ultra Series 3



Touchpad

Total Solution

Fingerprint

Total Solution



22 hrs

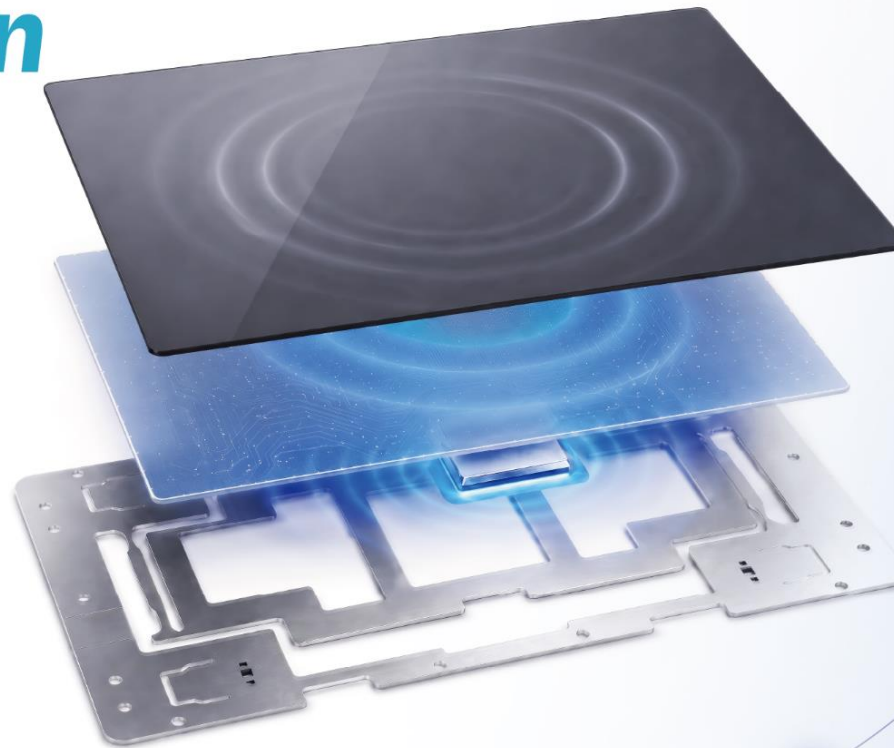
All-day Battery Life



Advanced Haptics

DESIGNED FOR SUPERIOR TOUCH EXPERIENCE

ELAN Touchpad Solution



**Precision Touch.
Intelligent Interaction**



AI Adaptive
Best Recognition for
Accessibility Mode



Advanced Haptics
Instant Feedback with
Action Confirmation

**1ST
VENDOR**



Stylus Support

Microsoft MPP Wacom AES



Dual Bank FW

Enhanced Reliability
& Safe Updates



High Report Rate

Real 240Hz Cursor
Responsiveness



Water Resistance

Stable Cursor Control
with Wet Finger



Ultra Low Power

Up to 56% Power
Consumption Saving

ELAN Solution inside Newly Released Microsoft Surface Laptop

Surface Laptop 8 Business 13.8 / 15-inch

Surface Laptop for Business

13.8 /15-inch | Intel Core Ultra Series 3

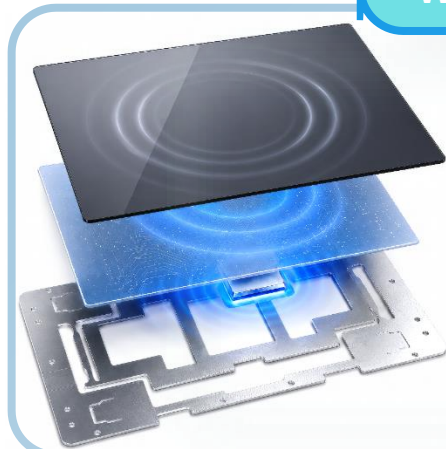


World's First Vendor Supporting Windows 11 Native Advanced Haptics **1ST VENDOR**

Hapticpad

Total Solution

Advanced Haptics



Control and comfort you can feel

Every click, drag, and snap has its own tactile response with Surface's new precision haptics on the touchpad, for responsive feedback you can feel. It's designed to give you more control with every gesture and click—paired with the backlit keyboard built for quiet and comfortable typing.



Snap Assist



Windowing



Drag & Drop



Haptic Touchpad Today



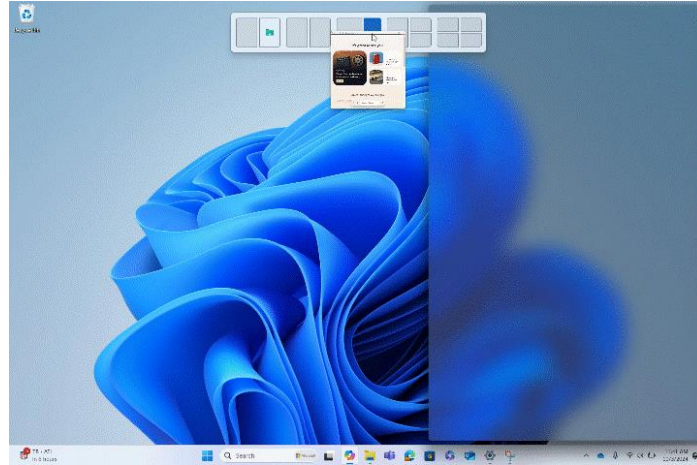
Advanced Haptic Touchpad



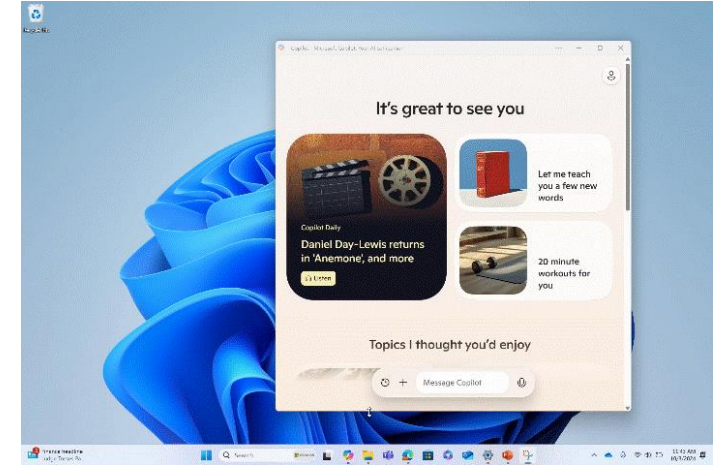
Instant Feedback for Action Confirmation



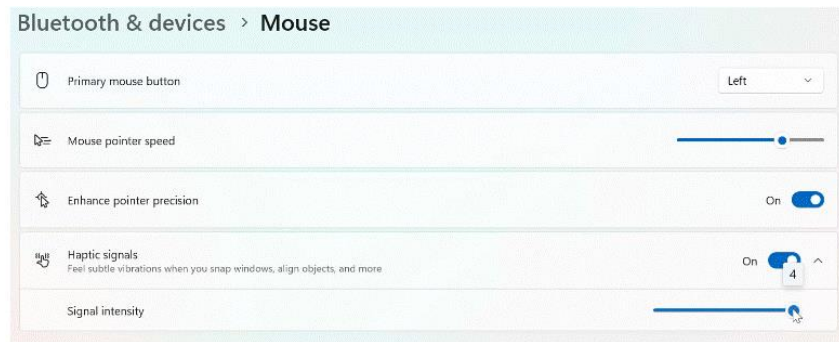
Snap Assist Bar
Waveform: Hover



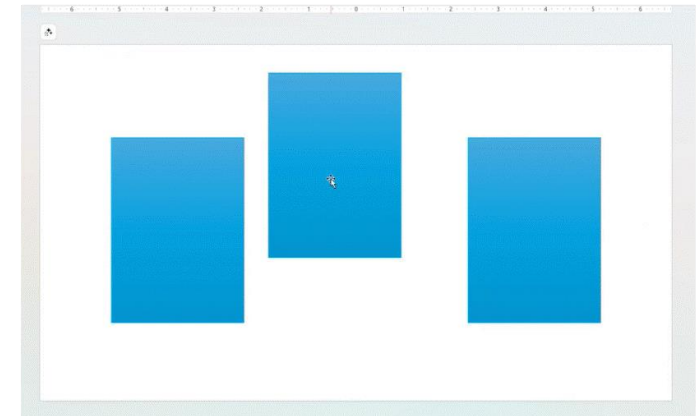
Resizing Window
Waveform: Collide



Slider Detents
Waveform: Step



Canvas Objects Alignment (Power Point)
Waveform: Align



Yoga Pro 9i Aura Edition: Pen on Haptic Touchpad

With ELAN Touchpad Solution



Yoga Pen Gen2 Support



ELAN Solution inside Newly Released Microsoft Surface Laptop

Surface Pro for Business (12th Edition) 13-inch

Surface Pro for Business(12th)

13-inch | Intel Core Ultra Series 3

 Microsoft Surface



Copilot+PC

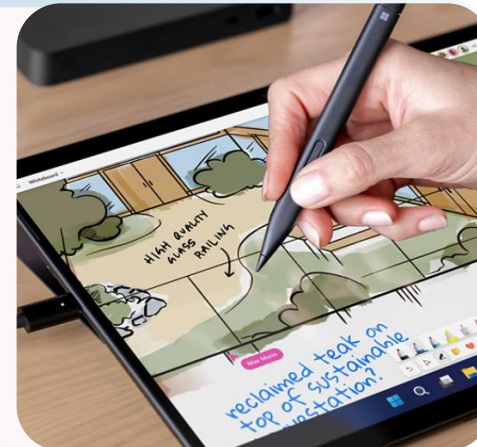


ELAN TSP

Gen8 Inside

Navigate your way—pen, touch, or voice

Switch seamlessly between a natural digital inking experience and a touchscreen responsive to intuitive gestures like drag and drop.



Slim Pen 2
MPP 2.6 Support



EPD with ELAN Capacitive Active Pen application

Our Shipping Record

reMarkable

R kobo

Bigme

ONYX
BOOK

掌阅
引领品质阅读

科大讯飞
IFLYTEK

小猿

mooInk

Eink

×

ELAN

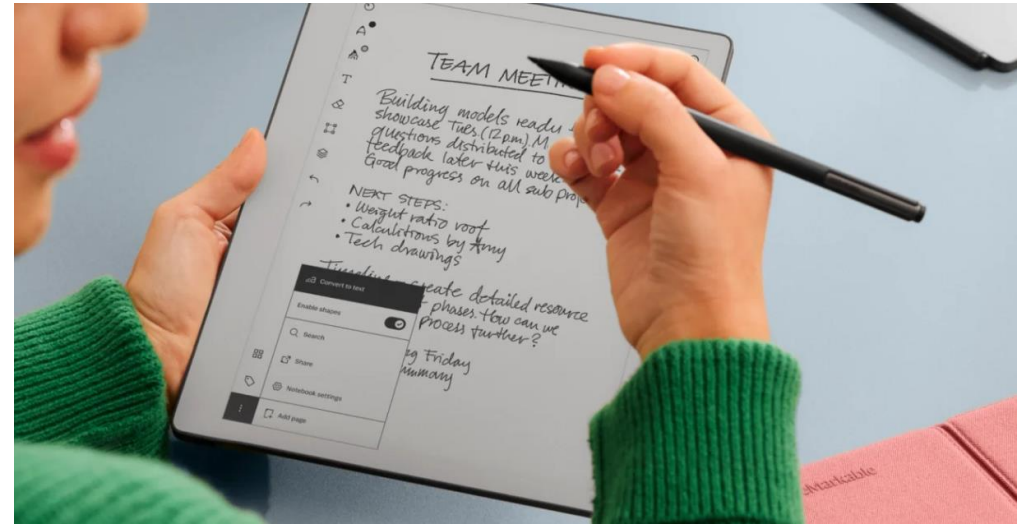


reMarkable Latest Product with ELAN Inside



228.1 x 187.1 mm

reMarkable Paper Pure €399



AI-ENHANCED
STYLUS



LOW
LATENCY

- Support Palm Rejection
- AI Prediction
- Low Latency (< 12ms)



Google Book (Aluminium) Revealed at Google I/O 2026

Five Major OEMs Preparing Fall 2026 Launches



Fingerprint Power Button



ELAN's Edge AI Strategy for Image Recognition Applications

Self-Developed Edge AI Algorithm



Camera

AI SoC

GElanNet

Co-Developed by



中央研究院
ACADEMIA SINICA



On Device AI Core Across Multiple Domains



Drones

Smart
Transportation

Automotive
ADAS

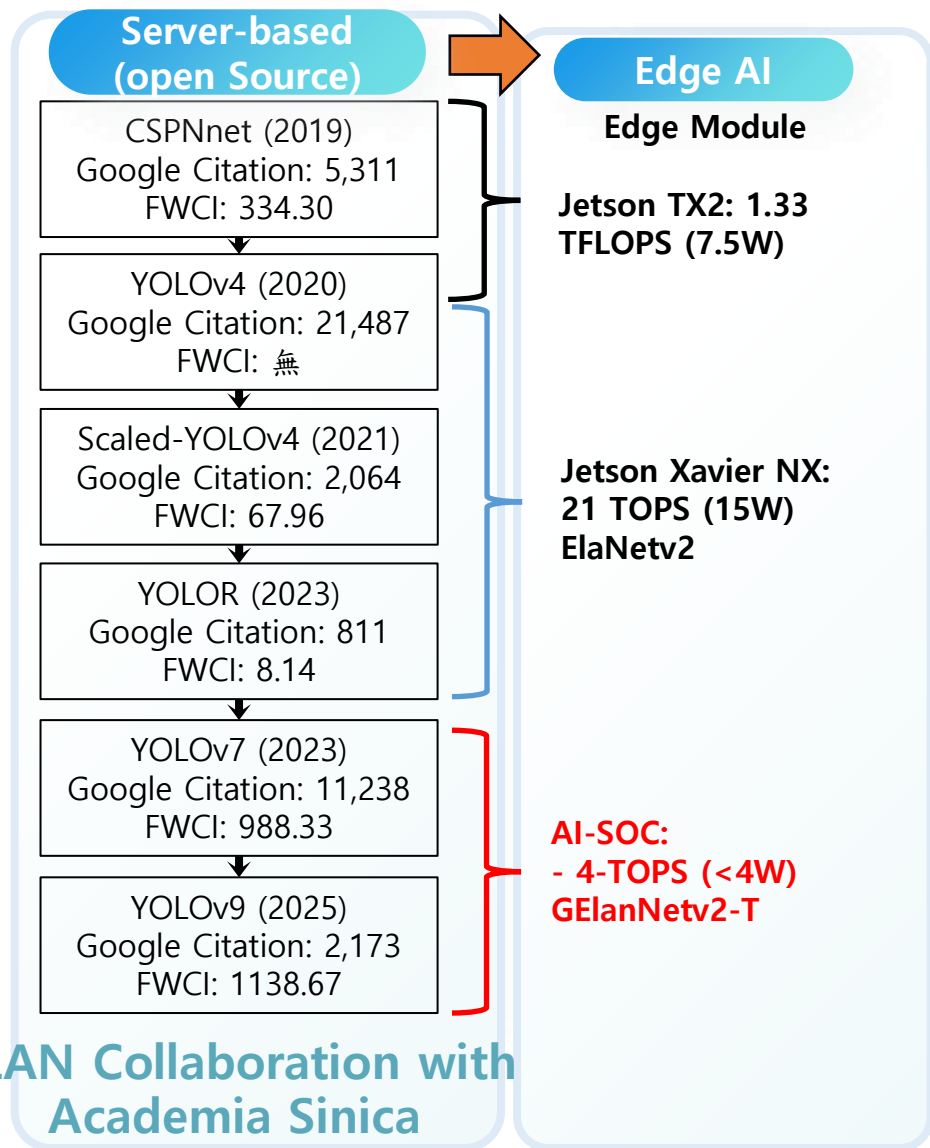
Robotics

Unmanned
Systems



Academia Sinica × ELAN World-Leading Image Recognition AI Models

ELAN's Proprietary On-Device AI Algorithm – **GElanNet** Requires Only Half the Computing Power of Open-Source Models



Related paper has been cited more than 10,000 times!

Computer Science > Computer Vision and Pattern Recognition

[Submitted on 27 Nov 2019]

CSPNet: A New Backbone that can Enhance Learning Capability

Chien-Yao Wang, Hong-Yuan Mark Liao, **I-Hau Yeh**, Yueh-Hua Wu, Ping-Yang Chen, Jun-Wei Hsieh

Neural networks have enabled state-of-the-art approaches to achieve incredible results on computer vision tasks such as with cheap devices from appreciating the advanced technology. In this paper, we propose Cross Stage Partial Network architecture perspective. We attribute the problem to the duplicate gradient information within network optimization. At the end of a network stage, which, in our experiments, reduces computations by 20% with equivalent or even superior performance on the MS COCO object detection dataset. The CSPNet is easy to implement and general enough to cope with architectures.

Computer Science > Computer Vision and Pattern Recognition

[Submitted on 21 Feb 2024 (v1), last revised 29 Feb 2024 (this version, v2)]

YOLOv9: Learning What You Want to Learn

Chien-Yao Wang, **I-Hau Yeh**, Hong-Yuan Mark Liao

Today's deep learning methods focus on how to design the most appropriate acquisition of enough information for prediction has to be designed. Existing methods will delve into the important issues of data loss when data is transferred to cope with the various changes required by deep networks to achieve better results. In addition, a new lightweight network that PGI has gained superior results on lightweight models. We verified that PGI has gained superior results on lightweight models. We verified that PGI has gained superior results on lightweight models. We verified that PGI has gained superior results on lightweight models.



陳良基的創新筆記

2021年12月13日 · 10

台灣在科技界的新世界第一！

感謝中研院、義隆電子、台大AI中心所有研究團隊的投入，也恭喜廖所長傑出優異的帶領！這是個可以改變世界的新技術。

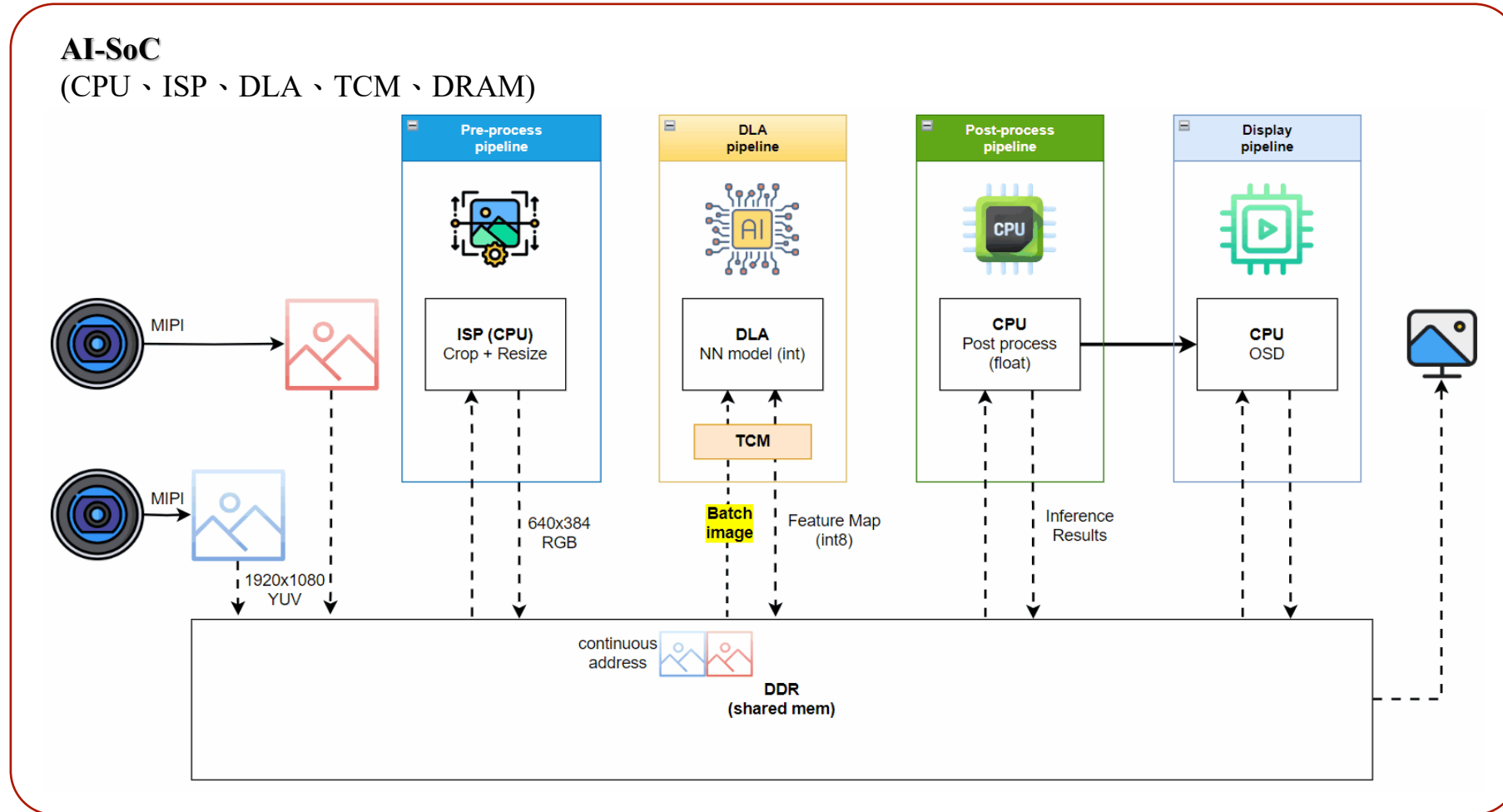
<https://www.ithome.com.tw/article/148305>



ELAN's Model Further Overcomes the Hardware Limitations of AI Chip

ELAN Proprietary AI Algorithm only requires one-third of the Computing Power of the Open-Source Code

Heterogeneous Computing : CPU & DLA Parallel Processing



TCM(Tightly Coupled Memory) DLA(Deep Learning Accelerator)

GElanNet : Built for Real-World Edge AI

YOLO-Level Vision, Optimized for On-Device Deployment



Based on

YOLOv4

YOLOR

YOLOv7

YOLOv9



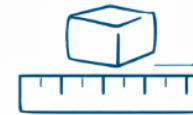
Compute Efficiency ✓

YOLO-Level, 1/3 Compute



Power Efficiency ✓

Low Power, Built for Edge



Small Form Factor ✓

Fits on Device



Low Cost ✓

Production-Ready

ADAS – There is no Best , Only Better

More Than 50% Car Accidents
in Taiwan had ADAS Installed



Collecting High-Quality Datasets to Optimize AI Performance

Scenes Collection Definition , Effective Annotation Tools , Efficient Datasets Algorithms.



Normal Case

Scenarios

Day_time

Weather

Driving_Scene

Day
Dusk/
Early morning
Night
Indoor

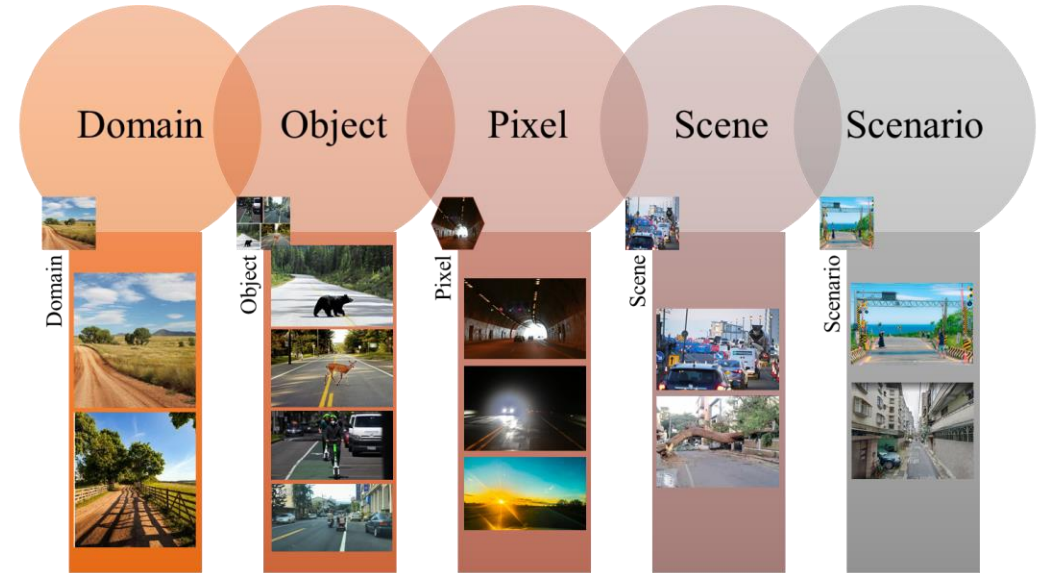
Sunny
Cloudy
Rainy

Freeway/Expressway
Rural
Downtown
Others

Object Definition :
Cars/Bus/Motorcycles (including riders)/ Bicycles
(including riders)/Pedestrians/Motorcycles/Bicycles

Data Balance !

Corner Case



1. Domain-level : Rural/Snowfield/Low Light Source
2. Object-level : Animal(AR)/Assistive Device
3. Pixel-level : Backlight exiting the tunnel 、 Sunset Glare 、 Oncoming Headlights at night
4. Scene-level : Rush Hour Congestion 、 Road Construction 、 Tree /Person down on the road (AR)
5. Scenario-level : Grade Crossing/Alley

ELAN Uses AR & GenAI for Data Augmentation to Improve Dataset

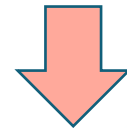
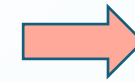
AR for Data Augmentation



Generative AI for Data Augmentation



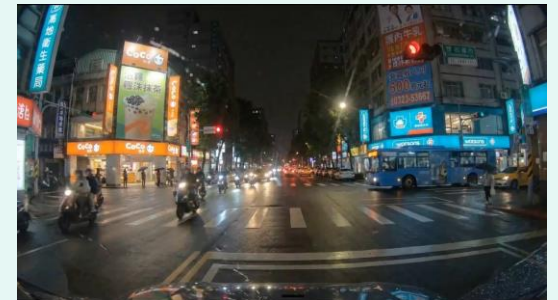
GenAI-generated fisheye video



Generate special vehicles & change the weather



GenAI-generated video



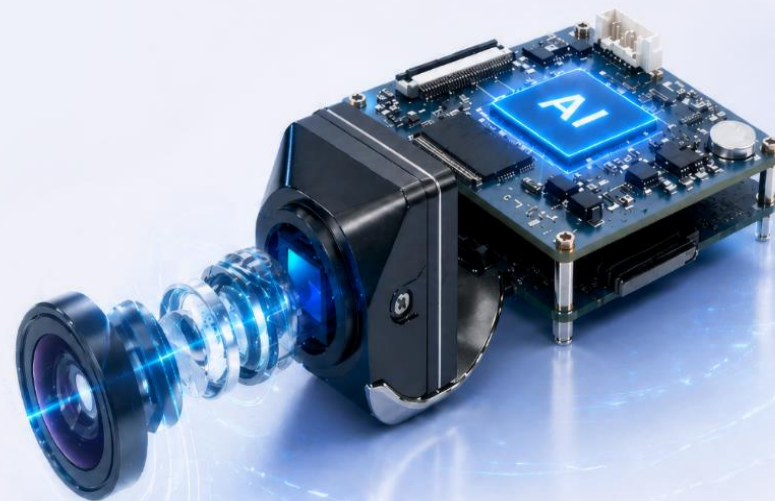
2025/12/03 22:10:25



AI × Drone

Intelligent Unmanned
Aircraft Systems

AI Vision & Tracking



Edge Computing
& Real-Time
Decision Making



AI-Calculated
High-Precision
Mission Execution



High-Speed
Tracking &
AI Surveillance



Seamless
Image MIPI/CVBS
Integration



Auto-Navigation Drone



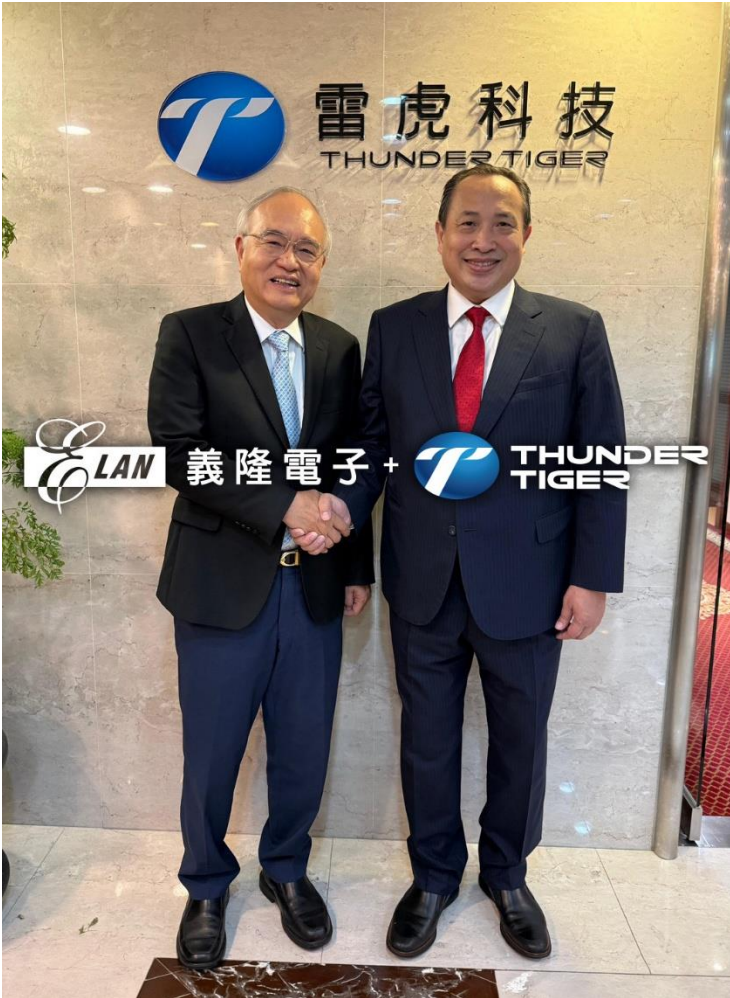
High-Speed Defense Drone



Fiber Optic Drone



ELAN Provides Drone & GCS Total Solutions for Thunder Tiger



ELAN Drone Product Portfolio



ELAN Ground Control Station (GCS) Product Portfolio

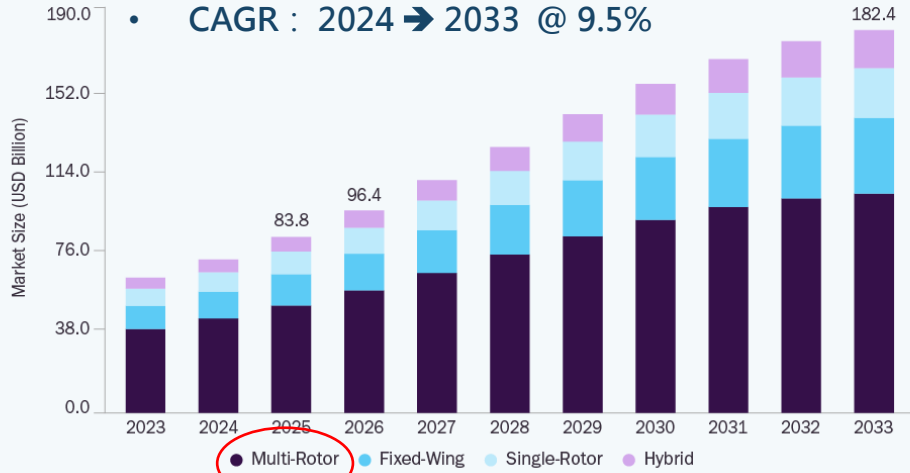


Global Drone Market Major Drone Market in Military & Commercial Usage

Grand View Research

Drone Market

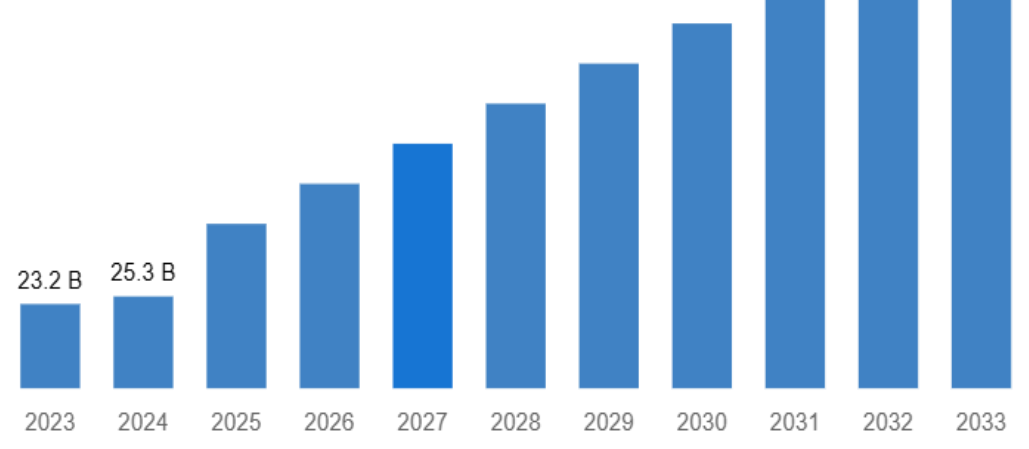
Size, by Product, 2023 - 2033 (USD Billion)



CMI

Global Drone Market 2024–2033 (By Billion)

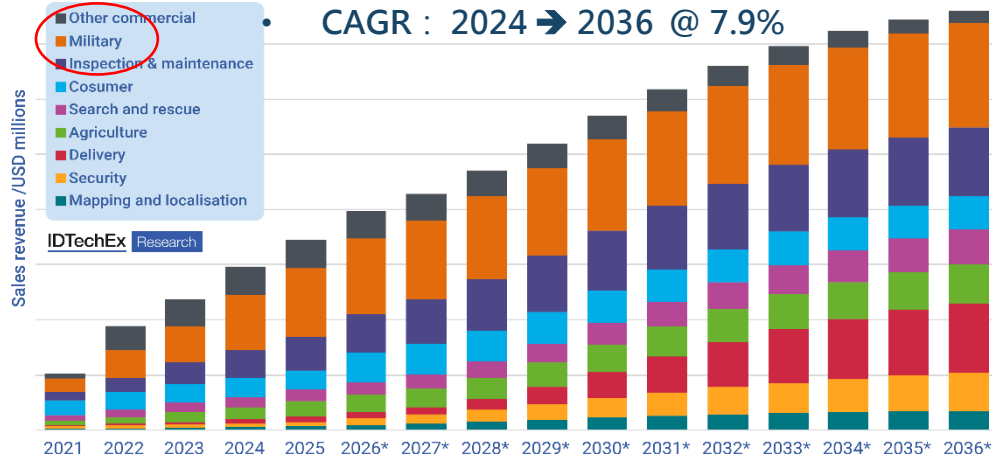
• CAGR : 2024 → 2033 @ 13.4%



IDTechEx

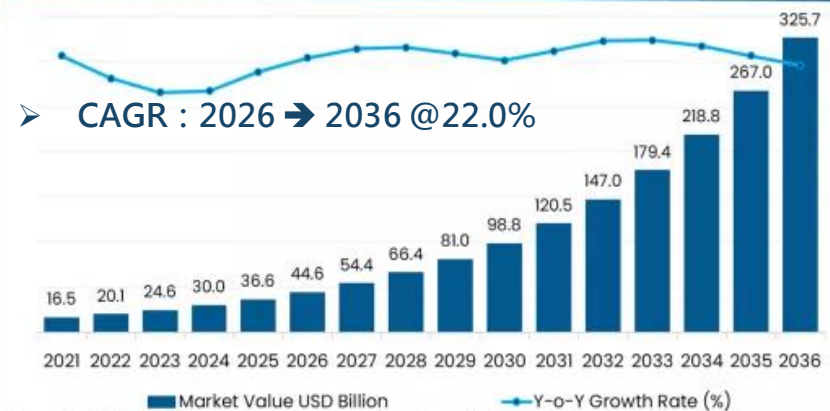
Global Drones Market Size Forecast by Scenarios 2021-2036

• CAGR : 2024 → 2036 @ 7.9%



Fact.MR

Value (USD Billion) Analysis, 2026-2036



Fact.MR

22.0%

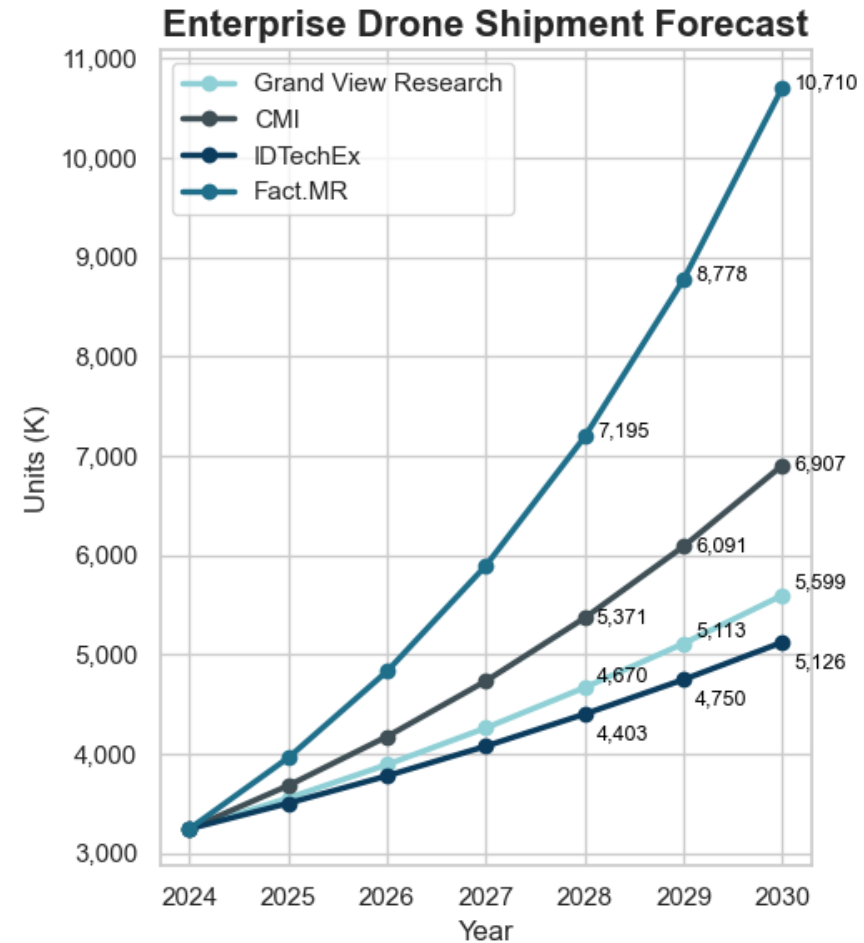
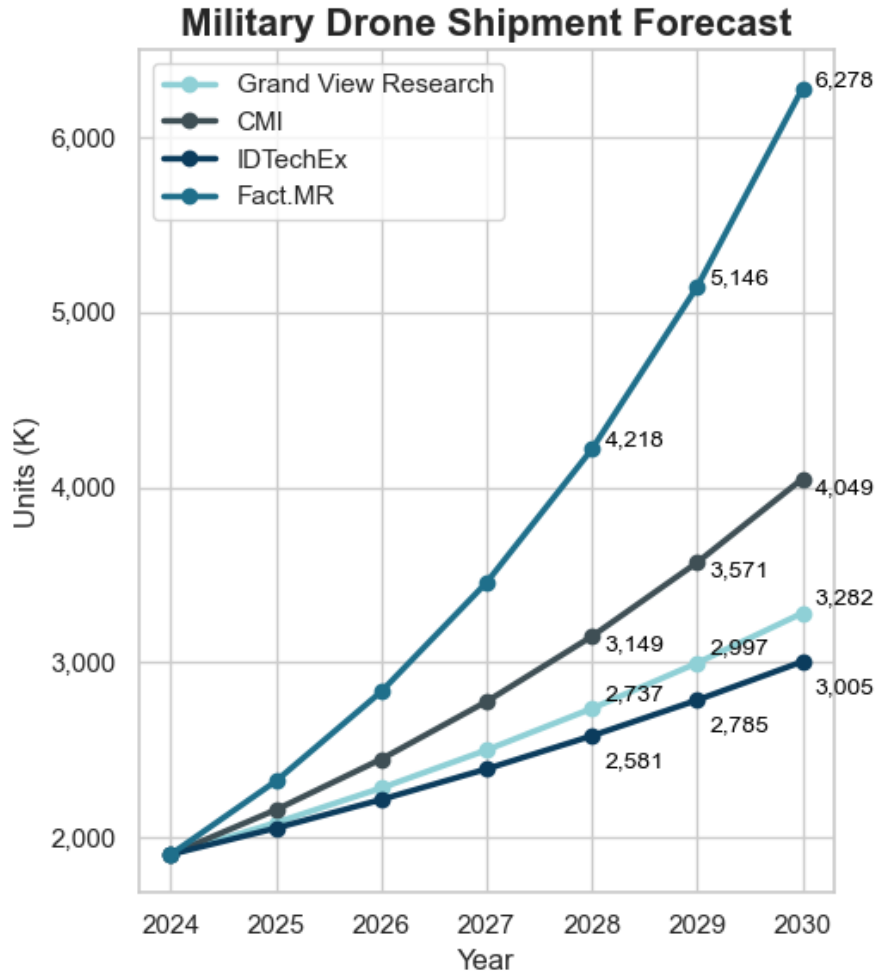
Global Market, CAGR 2026 - 2036

www.factmr.com



Military & Commercial Drone Shipment Forecast

The UAV Drones Industry Report shows that global drone shipments exceeded 11.2 million units in 2024, with 54% of them being consumer drones, 29% enterprise drones, and 17% military UAVs.



Asia-Pacific leads with 38% market share, North America follows with 33%, Europe holds 21%, and remaining regions capture 8% of the global UAV deployment base.

Empowering Drones with ELAN GElanNet Solutions



AI-Powered Drone Vision Recognition System

AI Target Detection & Tracking
Obstacle Avoidance



Power Saving



Compact Size



Ultra-Lightweight



Lower Cost



Extended Flight Range



Comparison of Skydio X10 & ELAN in UAV Solutions

Skydio X10

NVIDIA Jetson Orin (275 TOPS)
Obstacle Avoidance



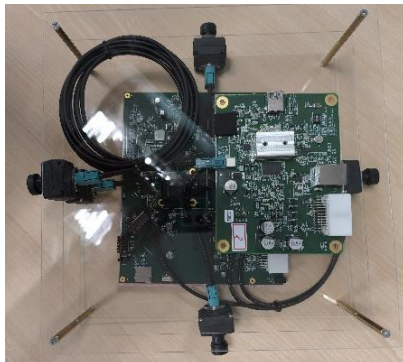
6 Cameras

Qualcomm QRB5165 (15 TOPS)
Gimbal



3 Cameras

Obstacle Avoidance (8 TOPS)

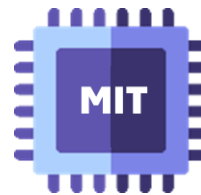


4 Cameras

ELAN Solutions



4/12 Cameras



Gimbal (2 TOPS)



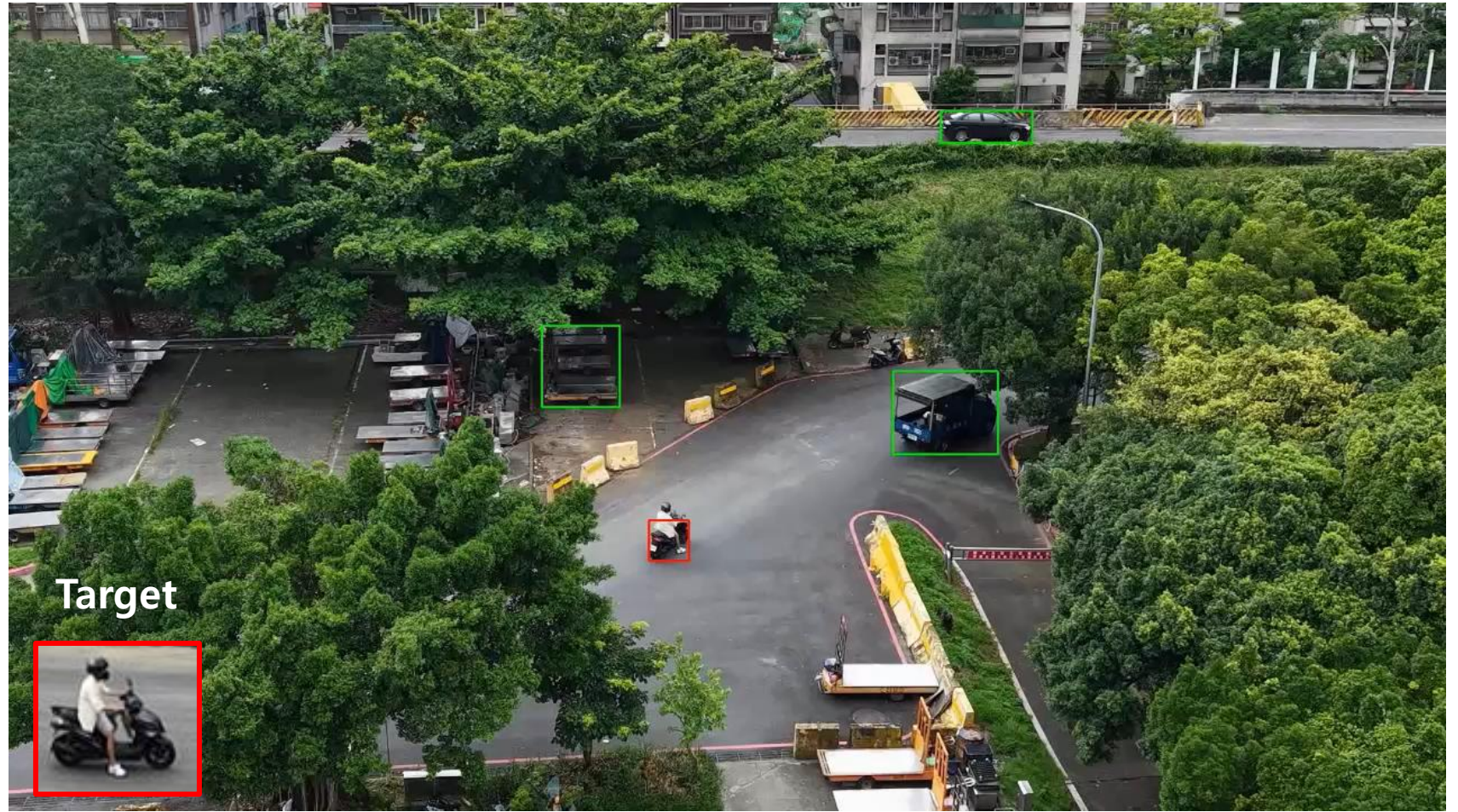
3 Cameras

AI-Powered Drone Vision Recognition System

AI Target Detection & Tracking



Drone Image Processing &
AI Object Detection/Tracking



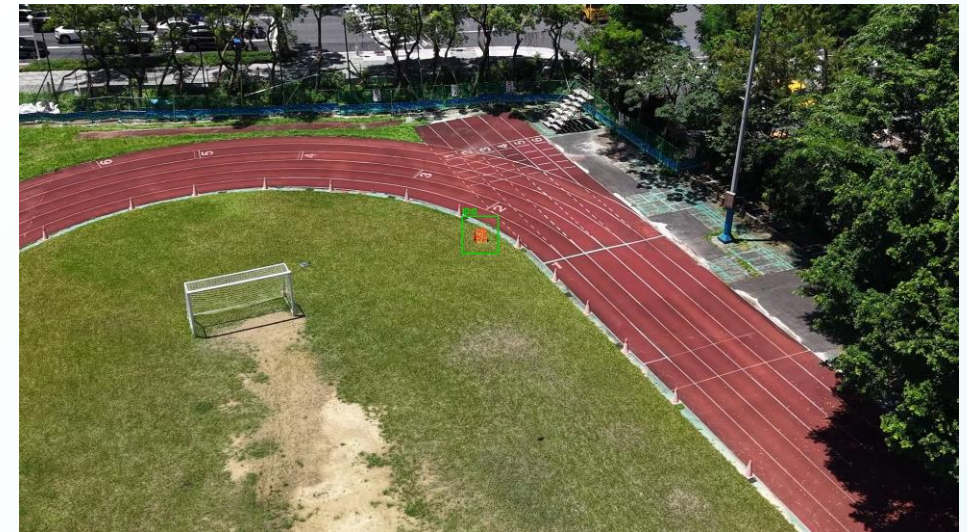
Target

AI-Powered Drone Vision Recognition System

High-Accuracy AI Object Detection & Tracking

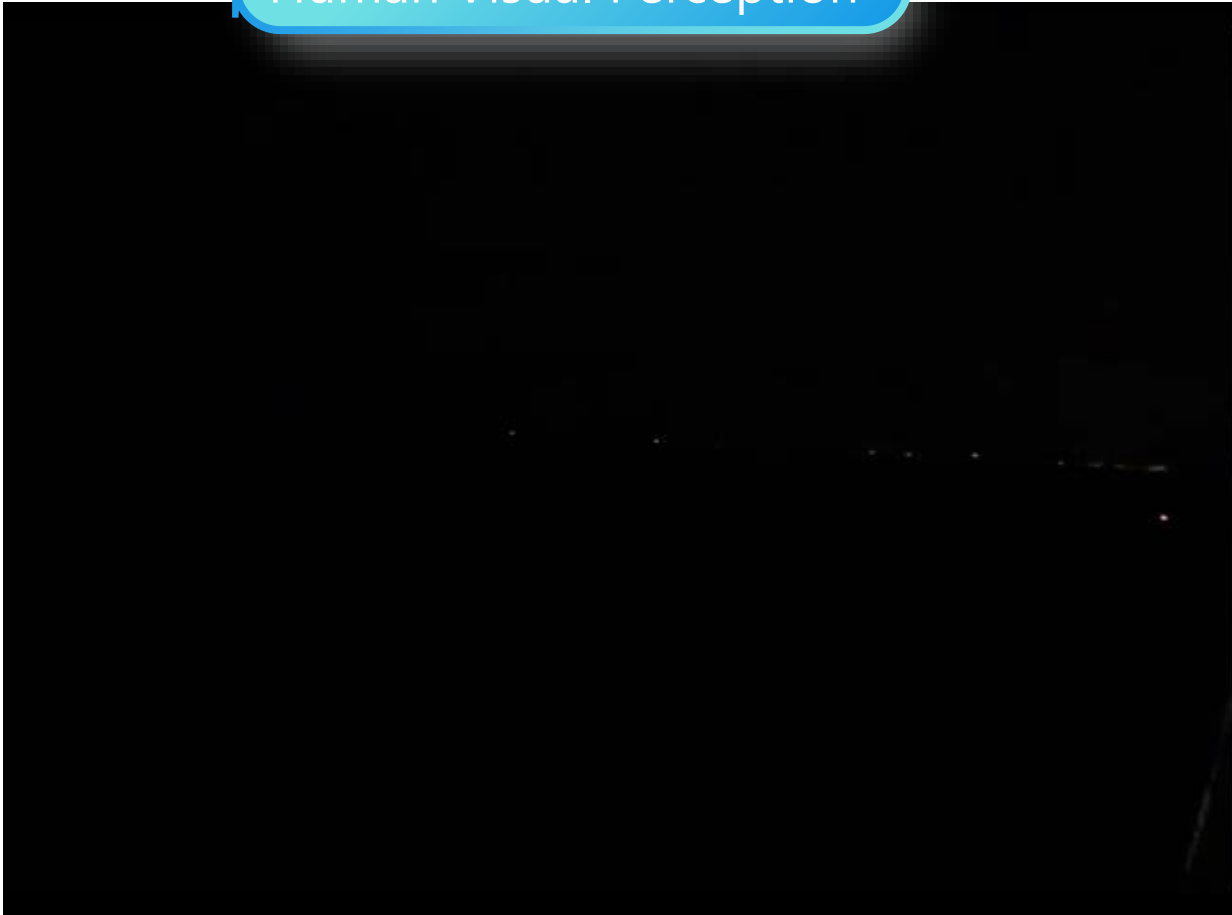


Optical Flow-Based Lock-On for Unknown Object Tracking



Drone Night Vision AI Target Detection & Tracking System

Human Visual Perception

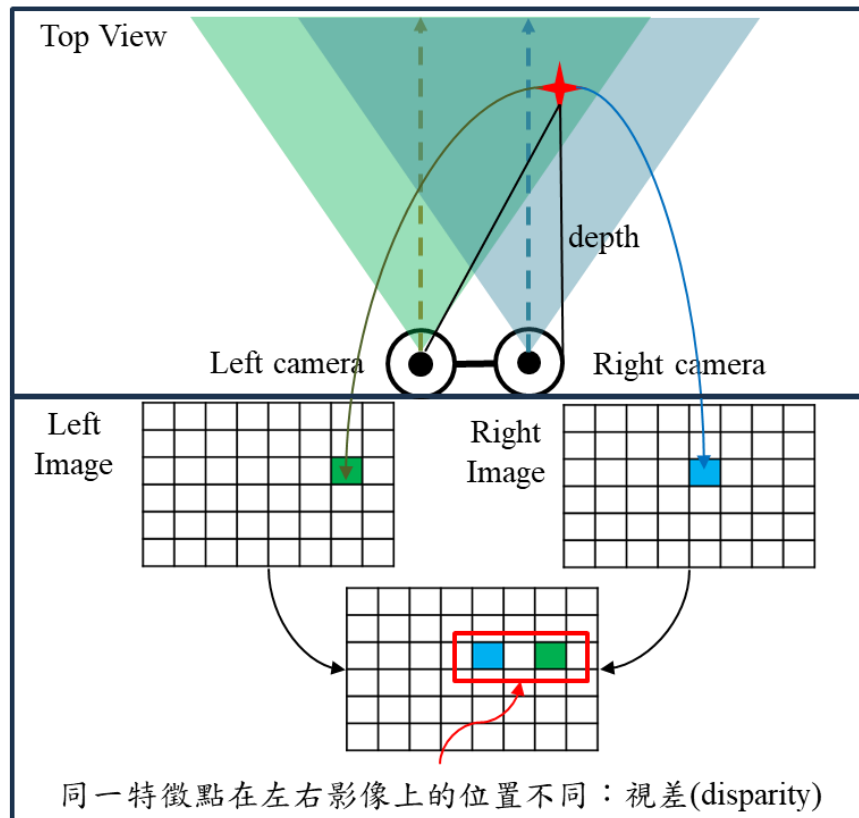


Sensor=0.001 Lux

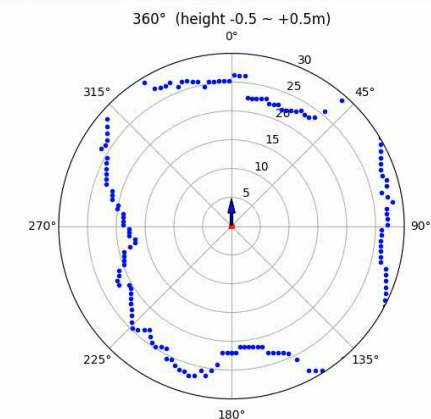
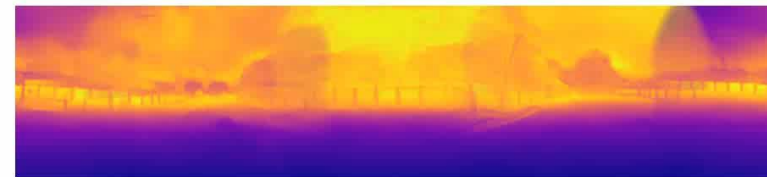


ELAN Drone Obstacle Avoidance Solutions

Stereo Depth Estimation



Surround View Depth Estimation



ELAN Image Signal Processor (ISP) for Drone Applications

Wide-Angle Correction and HDR for FPV-Class Drones (甲類無人機)



- Wide Horizontal FOV 150°
- Lens Distortion Correction
- Analog Output Clarity
- Enhanced Dark Detail
- Full-Color Night Vision

ISP Image Signal Processor Chip

Lens Distortion Correction



Before Distortion Correction



After Distortion Correction

Lens Defogging



Before Processing



After Processing

ELAN Mini LED Local Dimming w/ISP & Smart Touch for GCS

High Brightness for Drones in Outdoor Scenarios

Image Signal Processing

Mini-LED Local Dimming



>4000nits
High Brightness



>20000:1
High Contrast



>600
HDR



Power Saving
Extended Battery Life

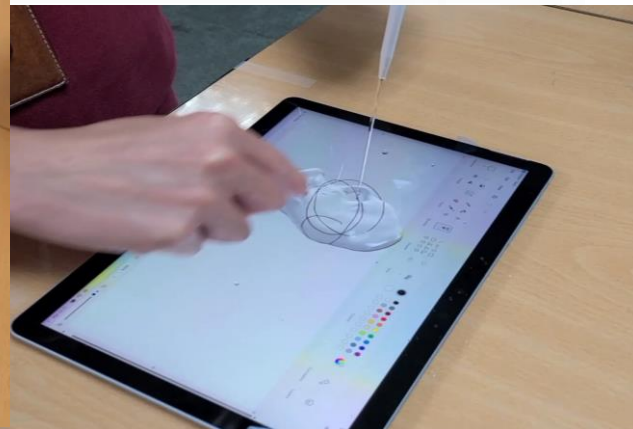
Zoom in x3



Zoom in x3
Tilt 45°



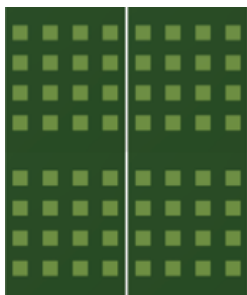
Waterproof & Glove Operation Solutions



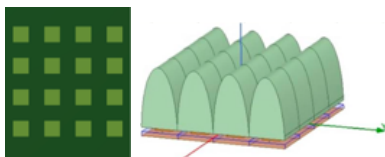
Defogging



ELAN Smart Antennas for GEO/LEO & Drone Communications



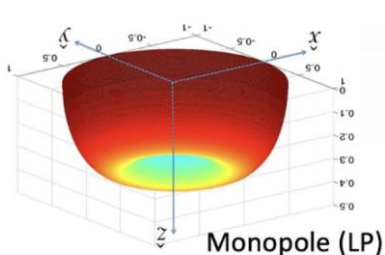
> 40 Km (21.5 dBi)



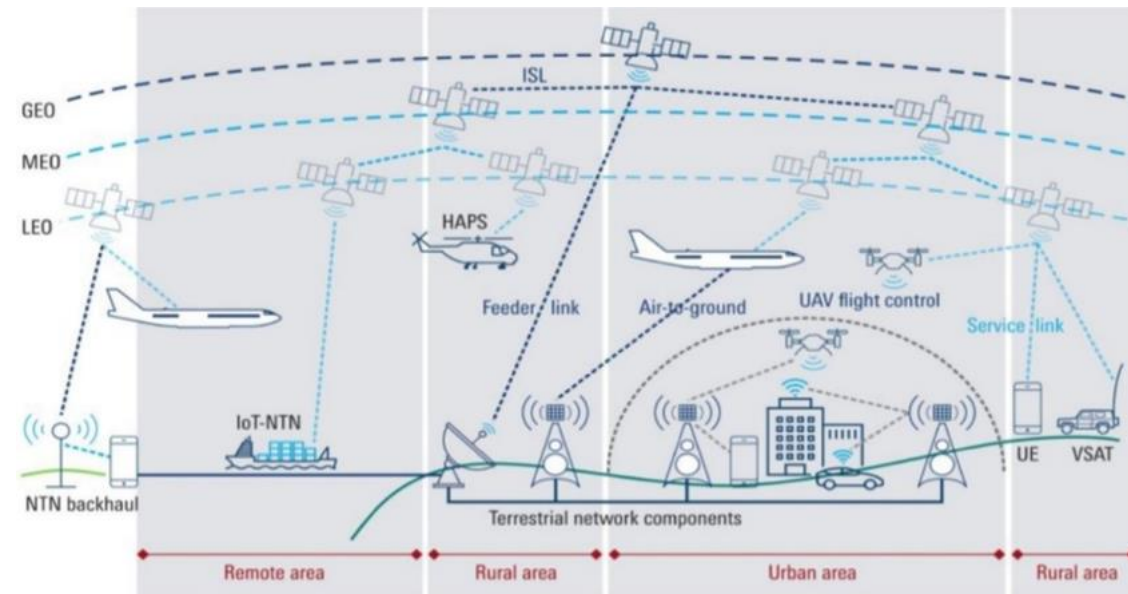
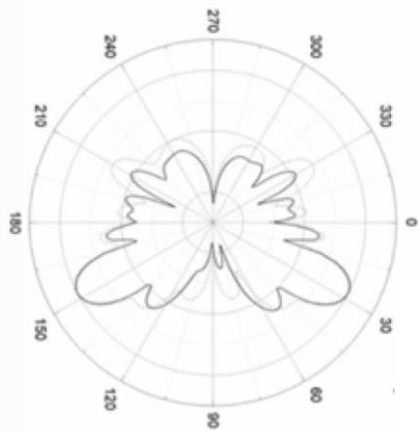
> 20 Km (16 dBi)



~ 8 Km (6.5dBi)



> 3.5 dBi



戰爭替代方案
(如俄烏戰爭)



人口稀少區域
(如山區、沙漠、極地...)



特殊應用場景
與災難備援
(如地震、海嘯...)



經濟海域
(如海洋漁船通訊)

Consumer	AERO	Mobility	IOT	Aerospace & Defense

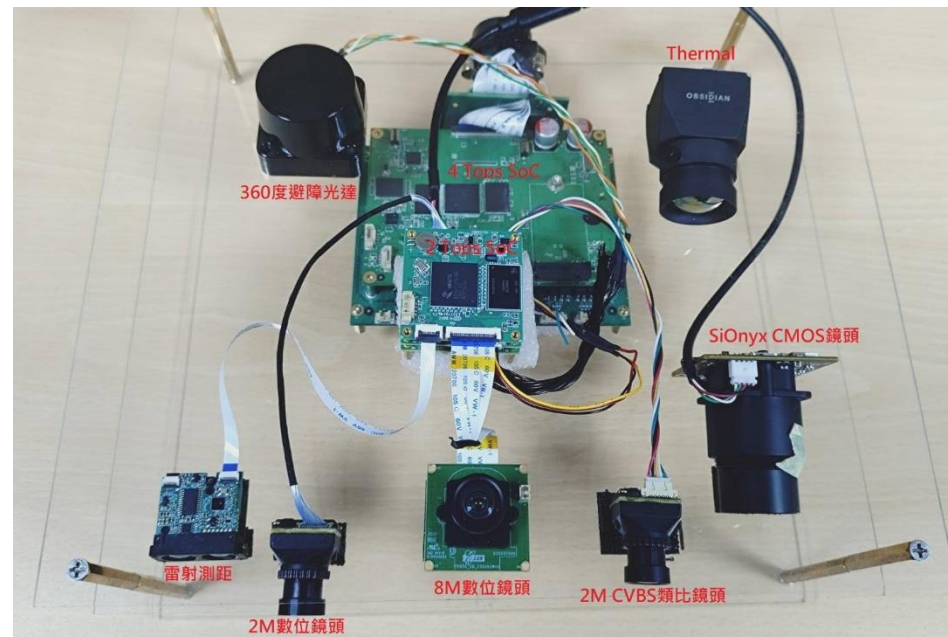
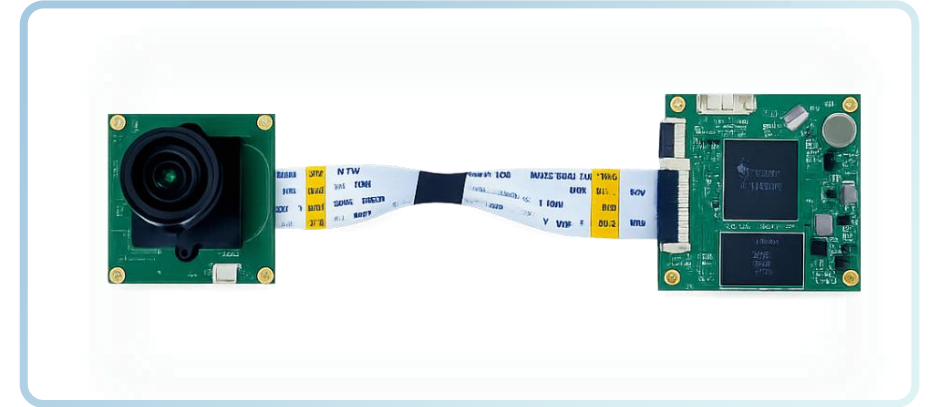
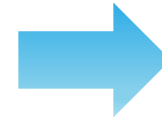
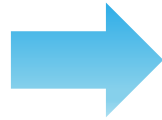


ELAN AI Vision Solutions Business Model Transformation

ISP IC

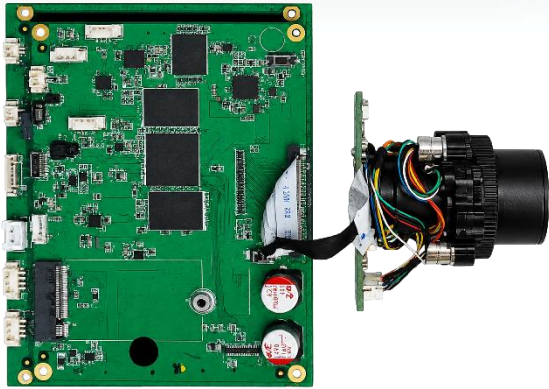
Camera Module

Camera Module + AI Box



ELAN AI Vision Solutions Support Wide Range of UAV Platforms

8M 4TOPS
w/Zoom Capability



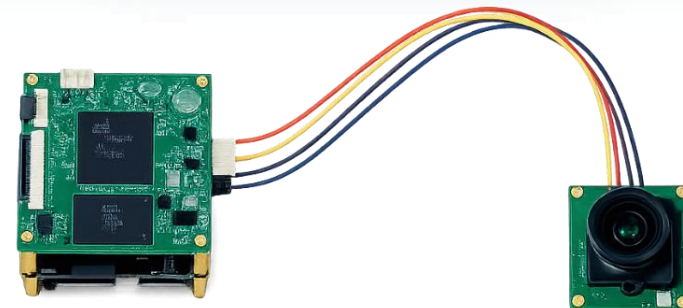
2M MIPI 2TOPS
w/Fixed Focus



8M 2TOPS
w/Fixed Focus



2M CVBS 2TOPS
w/Fixed Focus



ELAN Solutions Enable Diverse Drone Applications



Multi-Function UAV



FPV Loitering Munition



Tethered UAV



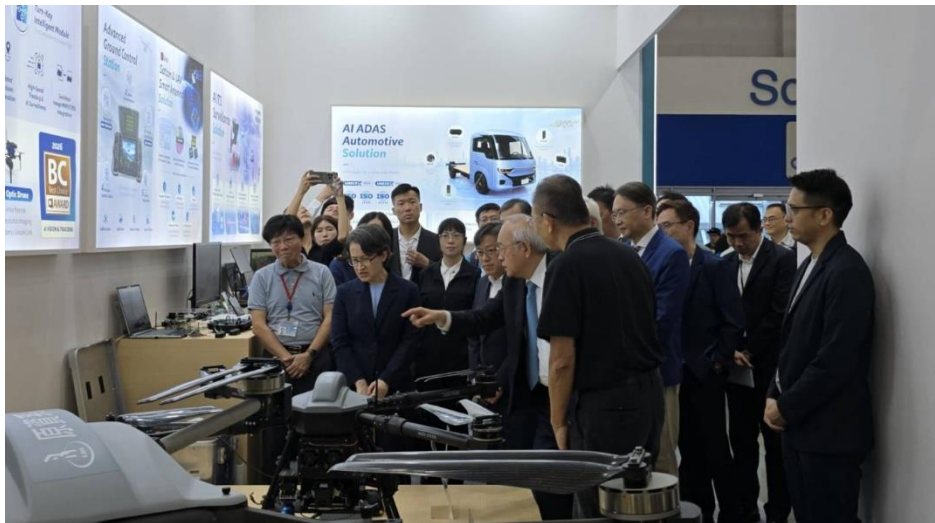
High-Speed Counter-UAS (C-UAS)



Fiber-Optic UAV



President Lai & VP Hsiao visited the Computex Booth to See Applications of Edge AI in Drones and ITS





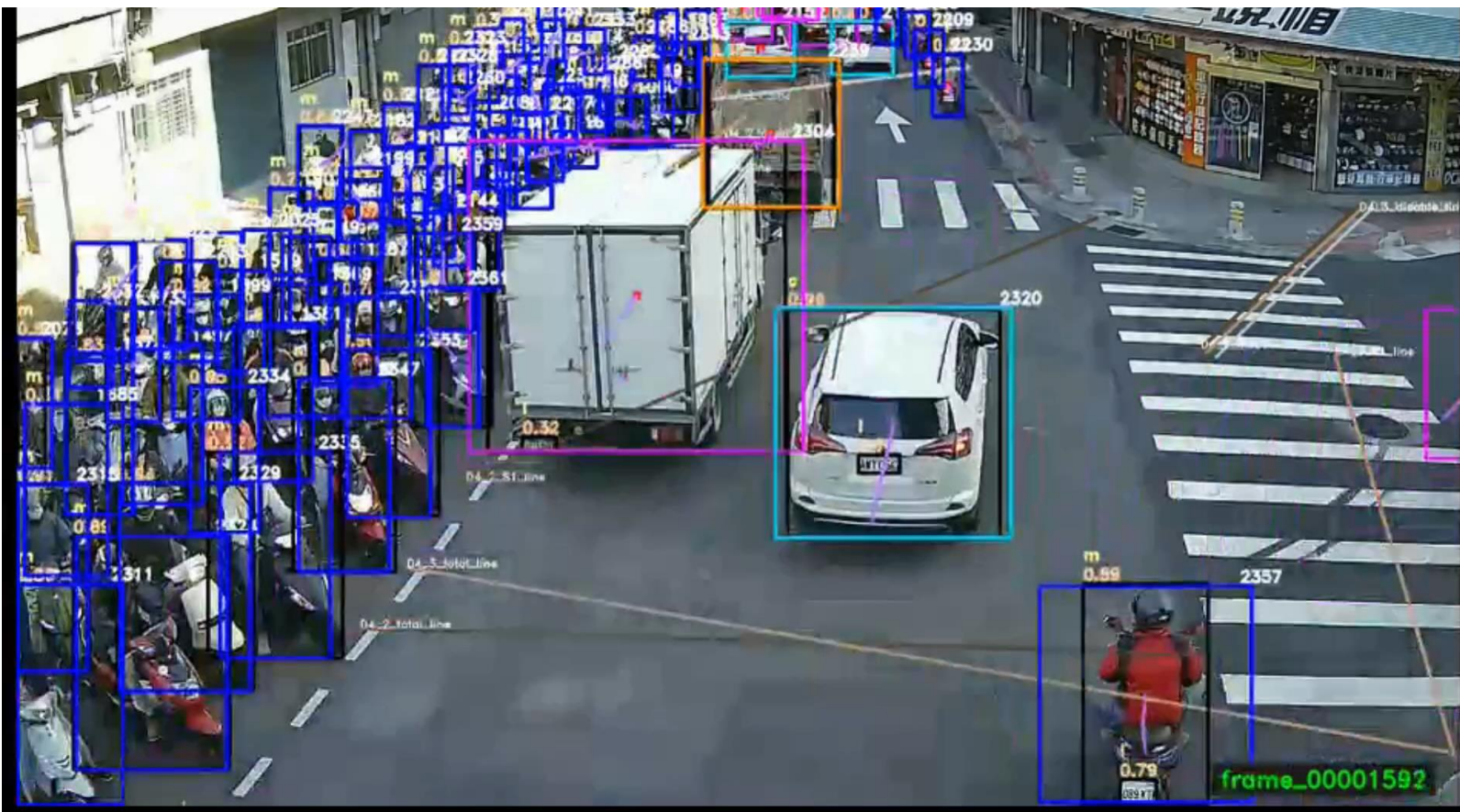
AI × ITS

Intelligent Transportation
System



Real-Time Traffic Information System for Traffic Signal Control

Improving the YOLO v4/v7/v9 AI Algorithms for ITS Using GElanNet



Edge Vision AI Traffic Signal Control
邊緣端AI感知與動態號誌控制系統

Traffic Signal Control System - Red Light Violation Prediction

Edge AI Enables Millisecond-Level Response

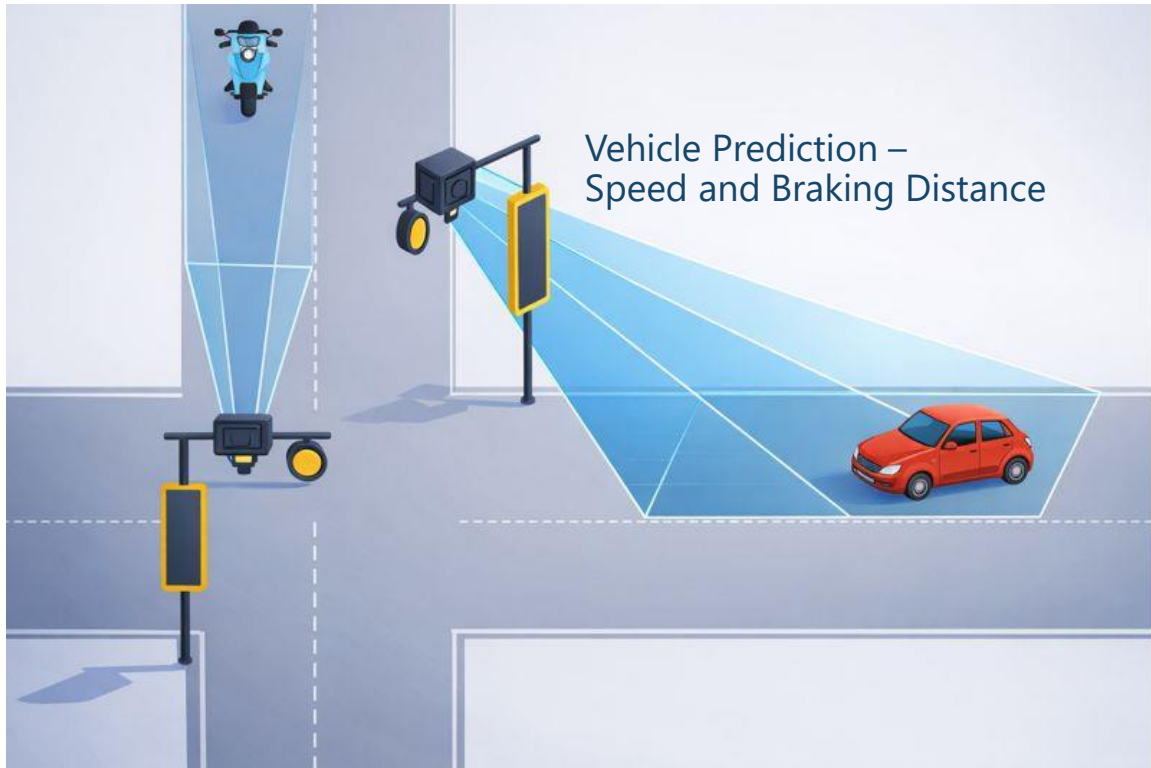
Capable of Detecting Vehicle Types & Speeds within 100 Meters in Real Time, Calculating Braking Distance & Predicting Red Light Violations



Real-Time AI CCTV Application at Blind Intersections

1. Real-time Detection of Vehicle Time-to-Intersection
2. Predictive Collision Risk Alert : Trigger Yellow-to-Red Transition

Red Light Violation Prediction



Bridge Piers Obstruct Sight Distance



ELAN Real-Time AI CCTV for Vulnerable Road User Safety

Safety Alert – Real-Time AI Image Recognition to Warn Pedestrians of Oncoming Vehicles & Alert Drivers to Pedestrians



Edge-based Pedestrian
AI Safety System
邊緣端行人AI安全保護系統

ELAN was Awarded the Highest Rating in the World's first ITS Camera Evaluation.

日間晴天 日間雨天 夜間晴天 夜間雨天

混合車流與行人AI偵測準確度

車輛偵測

F1 Score

0.9302

行人偵測

F1 Score

0.9238

轉向量偵測：95.29%

停等車輛數偵測96.68%

工業級環境耐受力



IP67
防水防塵等級



運作溫度：
-20°C 至 +60°C

嚴苛環境穩定運作

99.0 /100
綜合評分

在嚴格的測試標準下，獲得近乎滿分的卓越評價。



偵測即時性

34.67ms

平均延遲

15/15

反應速度極快，獲得 15/15 滿分評價。

絕佳的系統效能與穩定性



✓ 即時偵測 (滿分)

✓ 功耗控制 (滿分)



✓ 穩定性 (滿分)

✓ 資料格式 (滿分)



功耗

5.88W

實測功耗

10/10

能源效率高，低於 7W 標準，獲得 10/10 滿分。

Machines Must See and Decide - Real Time



×



Human Decision Making



Eye



Brain



Action

AI System at the Edge



Camera Input



Edge AI Core



GElanNet



Real-World Deploy

- Low Power
- Low Cost
- High Performance



Transportation



Vehicle Safety



Autonomous Systems

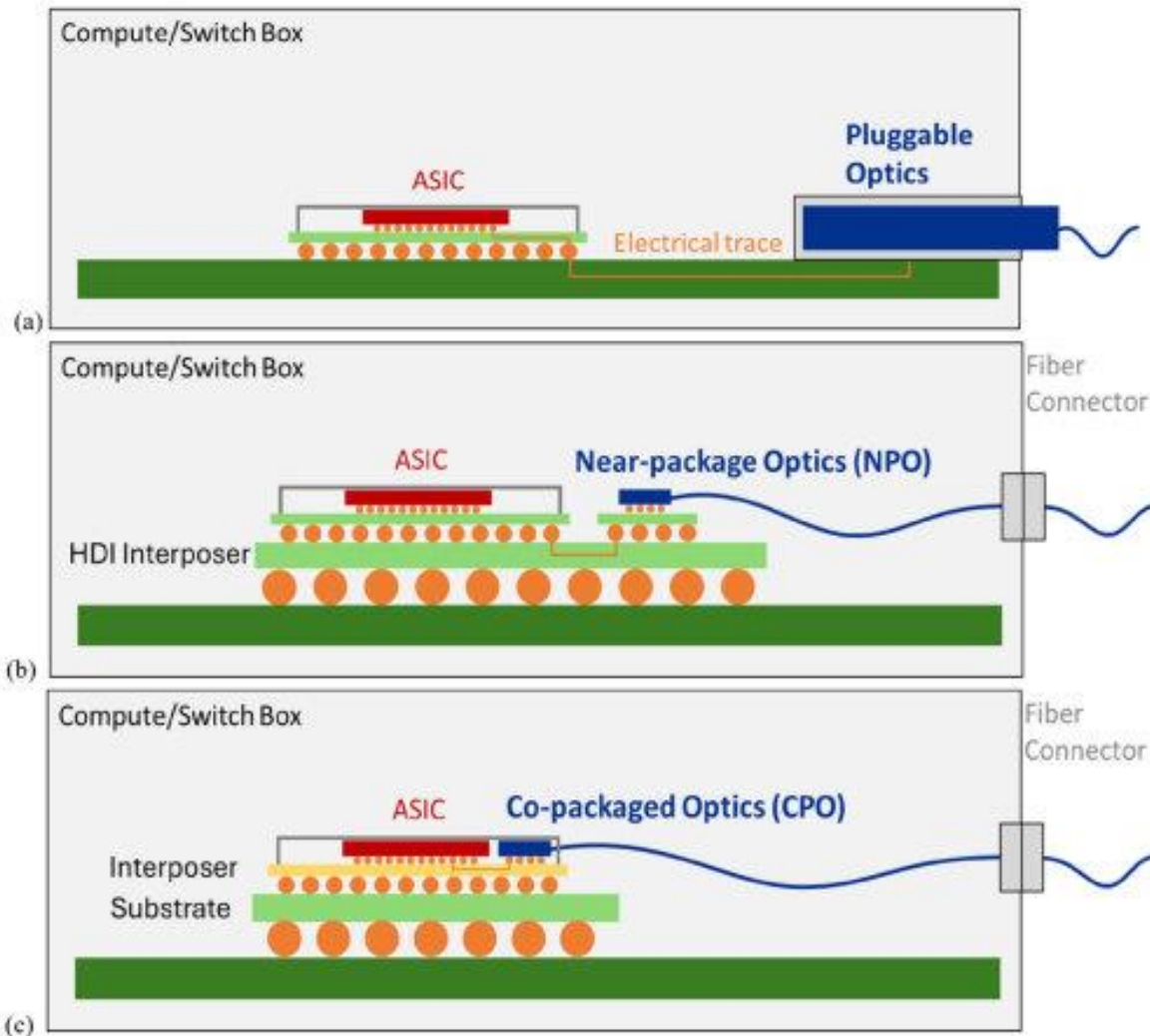


Robotics

Applications



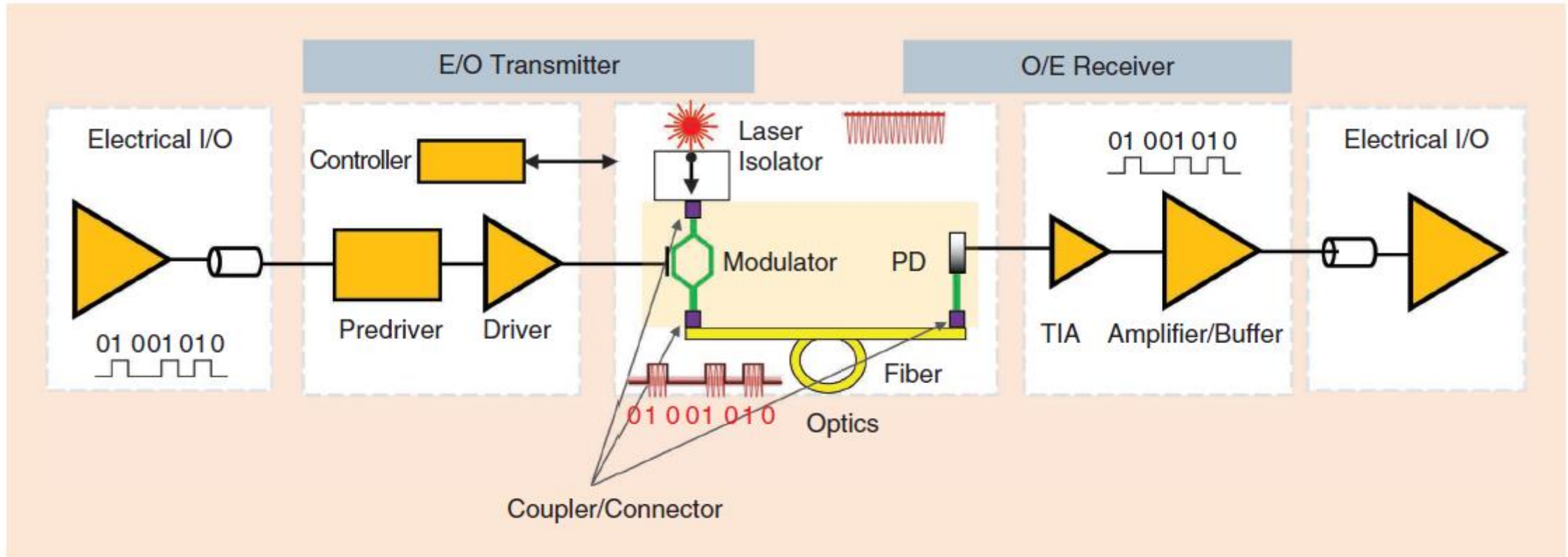
PETA Products Portfolio (Pluggable, NPO and CPO)



Summary Comparison

Feature	Pluggable Optics	Near-Packaged Optics (NPO)	Co-Packaged Optics (CPO)
Optics Placement	Front panel, off-board	On-board, near processor	Directly on processor package
Electrical Trace Length	Long	Short	Very Short (mm)
Power Efficiency	Lowest (highest W/bit)	High	Highest (lowest pJ/bit)
Bandwidth Density	Lower	High	Highest (>1 Tbps/mm)
Serviceability/Upgrades	Easy (hot-swappable)	Moderate	Difficult (replace entire package)

An Electrical & Optical Link (Optical Engine)





中央研究院
ACADEMIA SINICA



GElanNet

Q&A

